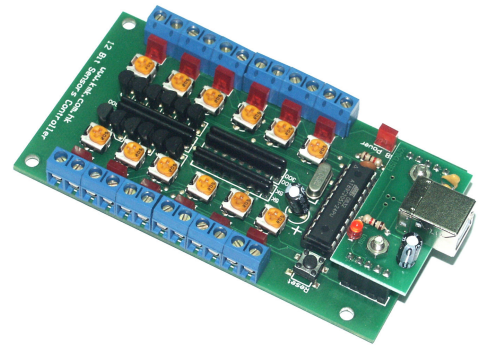


## KMK USB 12 Sensor Input Controller Operation Manual V3.1

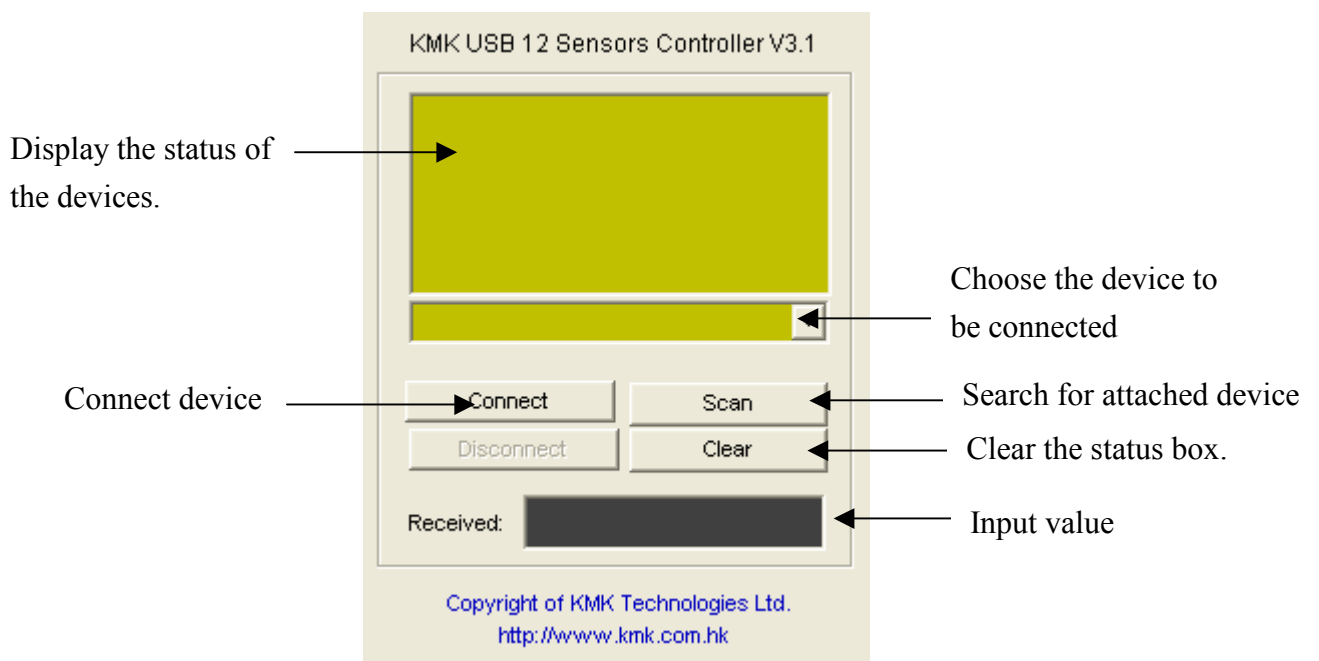
### Introduction

KMK USB 12 Light Sensor Input Controller Card is a plug and play controller for receiving up to 12 light sensors (LDR) or Switches signal easily. Driver and Visual Basic OCX control are provided on the CD or can be downloaded from our web site ([www.kmk.com.hk](http://www.kmk.com.hk)). Please check our web site for the most up to date software and drivers.



### Operations

1. Plug the USB cable to the Controller.
2. Connect to any USB port of the PC.
3. On the right hand corner of Windows will display a message “ KMK USB 12 Sensor Input Controller” and prompt for installing the driver.
4. Browse to the driver folder of the CD and click “OK” and the drivers will be installed automatically.
5. Install the KMK USB 12 In OCX provided on the CD or download from [www.kmk.com.hk](http://www.kmk.com.hk) .

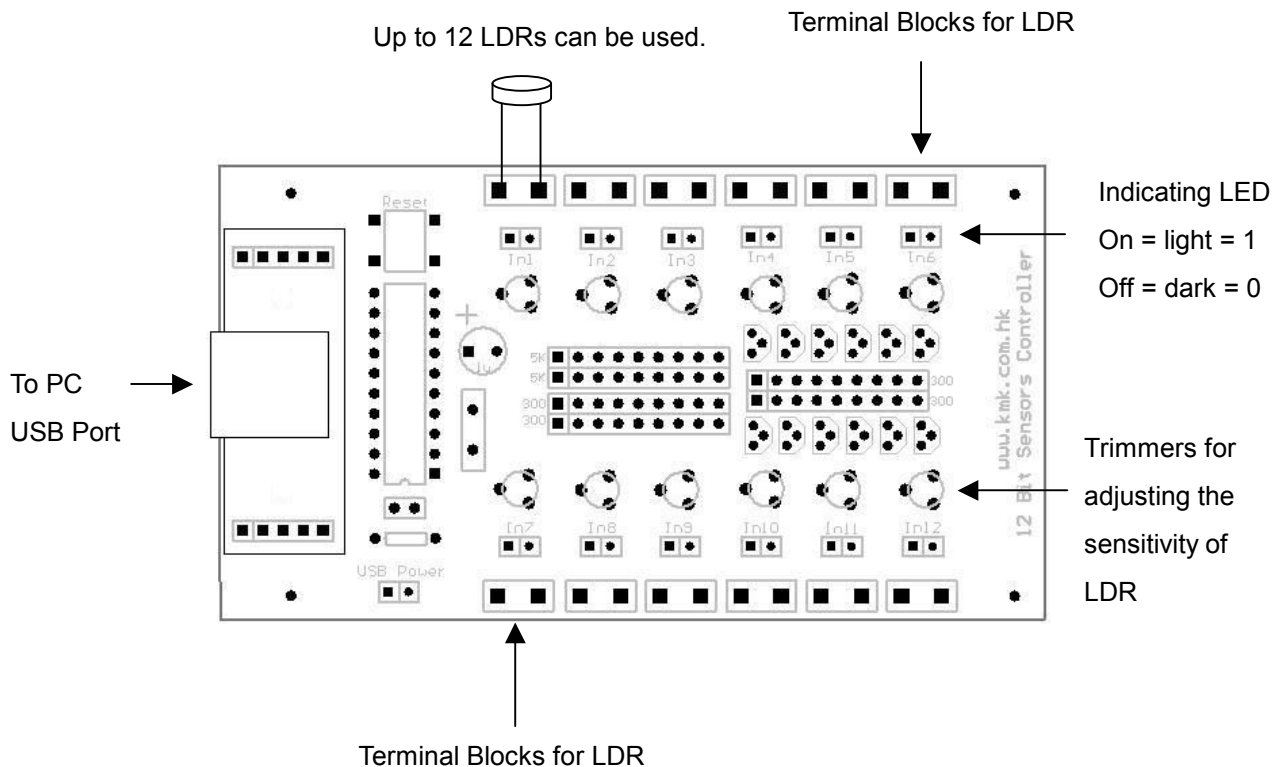


### KMK USB 12 In OCX Commands

AxKMKUSB1.Device = value	Value=Serial number of the Controller.
AxKMKUSB1.port_open_close = 1	Open the port
AxKMKUSB1.port_open_close = 0	Close the port
AxKMKUSB1.visible = false	Hide the OCX
AxKMKUSB1.visible = true	Unhide the OCX
a = KMKUSB1.Binary	Reading value from input port

- For writing code to control the USB, the serial number must be entered before open or close the port.
- The first OCX will be named 'AxKMKUSB1' and the second OCX will be 'AxKMKUSB2' and so on.
- Using VB **mid( string ,position, length)** command to extract the status of each bit. For example, to get the status of bit one, put the following command in a timer and the variable "Result" should return the status of bit one of the input port.  
Result = mid(AxKMKUSB1.Binary, 1, 1)

### Part Descriptions



Note: No power supply is required by KMK 12 Light Sensor Input Controller Card since the power will be provided internally by the USB port of PC.